

Centre international de formation européenne (CIF) logo and DEFI logo are at the top. The word "RISK" is written in large, 3D red block letters. Below it, the text reads "WHAT IS RISK ALL ABOUT?" and "CONVERTING RISKS INTO SPRINGBOARDS OF SUCCESS". At the bottom, it says "CIF SEMINAR ROMA-BERLIN-NICE 2022-23" and "MICHEL-HENRY BOUCHET".

1

Text at the top: "CAN YOU PREDICT RISK? RISK = UNCERTAINTY = INFORMATION DEFICIT". The slide features a collage of images: a sign for "BOLSONARO DEUERRADO", a person with a "NO MAY COMIDA" sign, a line graph showing volatility, a photo of two men, a building with a red flag, a person walking, and a photo of Donald Trump. At the bottom right, it says "Michel H. Bouchet (c) CIFÉ 2022-23".

2

Section header: "2 TYPES OF CRISES:". A swan logo is on the right. Two columns describe crisis types:

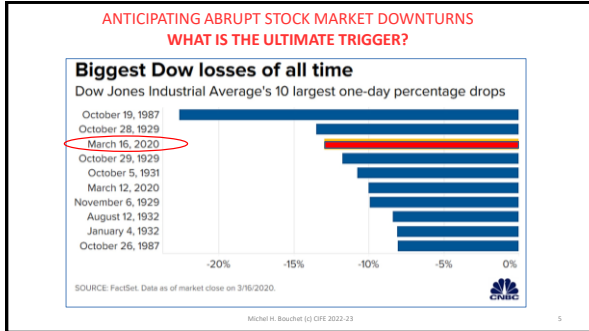
- Type 1 Crisis:** It emerges brutally, its timing cannot be anticipated, and it requires drastic adjustment.
  - 1929 crisis
  - 1973 OPEC oil crisis
  - 12/2004 Asian tsunami
  - 2011 earthquake-driven Fukushima disaster
  - Twin Towers 1/11
  - Turkish lira crisis 04/2021
- Type 2 Crisis:** It emerges brutally, it is unprecedented but probable, and it could have been expected.
  - 1985 EMCs debt crisis
  - 1986 Chernobyl
  - 1999 Asian banking crisis
  - 2008 financial crisis
  - Covid-19** (CIA 2005 report, Bill Gates 2015 TED talk, 2016 World Bank Facility, Obama 2016 pandemic report, 10/2019 Crimson Contagion planning exercise International Security Program)
  - Russia's war against Ukraine**
  - (next) **Climate change crisis!**

Small images of a building and a virus are included. At the bottom right, it says "Michel H. Bouchet (c) CIFÉ 2022-23".

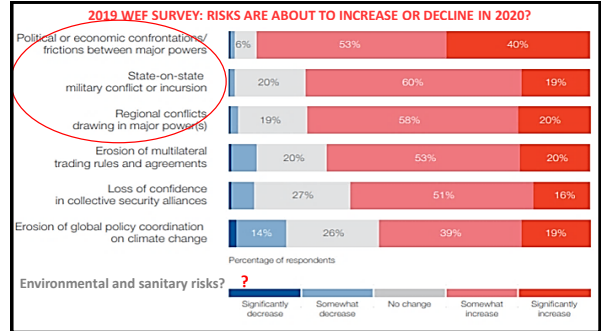
3



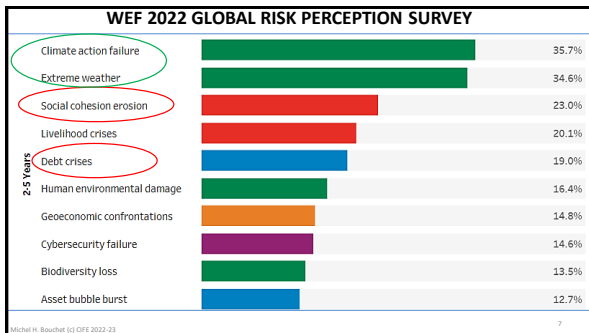
4



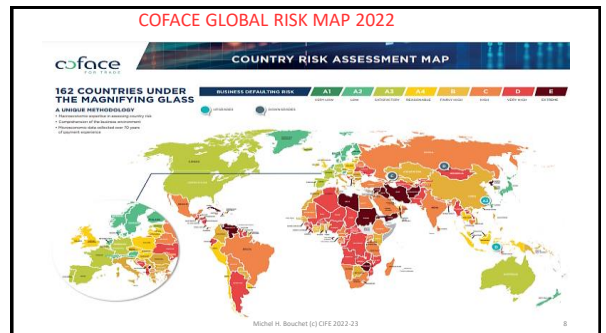
5



6



7



8

### WHAT IS RISK?

- ▶ Risk stems from all the negative consequences of the Unknown
- "Risk means more things can happen than will happen." Elroy Dimson
- "Risk" derives from the early Italian *risicare* = "to dare" : risk is a **choice** rather than a fate. (Peter L. Bernstein- *Against the Gods: The Remarkable Story of Risk*)

**Risk is always related to Uncertainty!**

Michel H. Bouchet (c) CIFE 2022-23 9

- ▶ Risk stems from all the uncertainty regarding current or future situations, where information about the situation's outcome is **insufficient, lacking or wrong**
- Information availability = measure of risk (BOP, debt data, income gaps, governance, corruption...)
- Information scarcity = taking action might produce negative and costly consequences (investigation time, transaction cost, delays...)

Michel H. Bouchet (c) CIFE 2022-23 10

9

10

### COUNTRY RISK FOR HISTORIANS?!

General government debt: [View data](#)

OECD Q2 2021 public debt Data= 2015 public debt ratios

Figure 2: Trend of Budget and Current Account Balances (% GDP) (Source: INS, 2016)

AFRICAN DEVELOPMENT BANK  
TUNISIA  
COUNTRY STRATEGY PAPER  
2017-2021

Latest available debt data as of 2021

Michel H. Bouchet (c) CIFE 2022-23 11

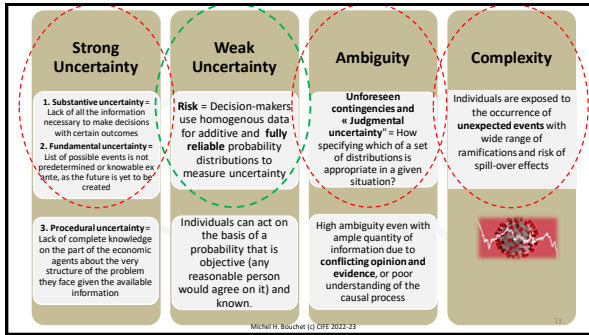
11

### RISK & UNCERTAINTY

- ▶ Frank Knight: 1921 Risk stems from outcomes that are unknown but can be tackled with probability distribution....  
Uncertainty stems from a deficit of information, hence randomness of results
- ▶ Harry Markowitz: 1959: Risk = probability of loss = historical volatility in returns as measured by standard deviation or Beta.  
But risk diversification and tolerance also matter!
- ▶ J.M. Keynes: (Treatise on Probability 1921): Non-linear nature of risks and danger of expecting the future as simple projection of the past: Role of animal spirits in volatility spill-over and herd behavior
- ▶ Ulrich Beck: 2010: « Global risk society where current decisions and technological developments trigger long-term global impact » (warming, terrorism, pollution, financial deregulation...)= secular stagnation?

Michel H. Bouchet (c) CIFE 2022-23 12

12



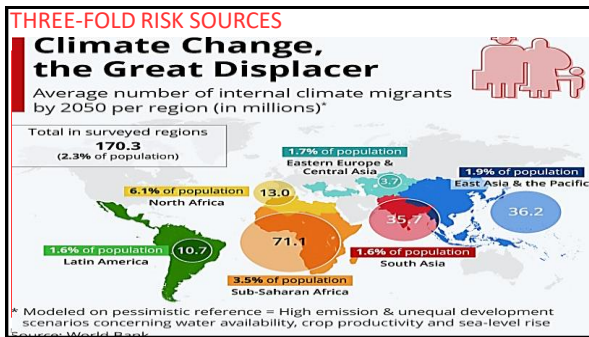
13

**ILLUSTRATION OF COUNTRY RISK EXAMPLES OF EVENT UNCERTAINTY**

Country Risk Event	Strong uncertainty ?	Weak & measurable uncertainty	Ambiguity ?	Complexity ?
<b>Economic events</b>	FDI decision in post-Brexit UK	Exchange rate depreciation	Inflation decrease; growth slowdown	Sharp fall in oil prices Corona Virus
<b>Socio-political events</b>	Revolution, strikes and coup d'état	New market-oriented and pro-business government	High rate of electoral abstention	Upcoming elections; mounting corruption
<b>Financial events</b>	Nationalization of banking system	Interest-rate increase	Over-valuation of tech companies QE & ultra-low rates	External debt default
<b>Spill-over events</b>	Regional crisis contamination	US economic recession	€/USD volatility	Regional competitive devaluations Systemic crisis

Michel H. Bouchet (c) CIFE 2022-23 14

14



15



16

**XIII<sup>e</sup> CENTURY:  
GRADUAL SHIFT  
FROM CIRCULAR  
TIME TO  
LINEAR TIME**

Michel H. Bouchet (c) CIFE 2022-23

17

**RISK HAS TO DO WITH UNCERTAINTY REGARDING THE FUTURE,  
HENCE THE NEED OF TACKLING FUTURE PROSPECTS!**

« Ancient times » = circular time... until the Middle Age

XV<sup>e</sup> century Renaissance = « Modern time » = Merchant time  
= linear time of economic & financial transactions +  
secular progress

Michel H. Bouchet (c) CIFE 2022-23

18

**THE « DISCOVERY » OF RISK**


Michel H. Bouchet (c) CIFE 2022-23

19

**THE DISCOVERY OF THE  
MEASURE OF RISK**

Michel H. Bouchet (c) CIFE 2022-23

20



**NICOLAS DE CONDORCET:** 1765: PROBABILITY DISTRIBUTION AND STATISTICS (BEGINNING OF BIG DATA?)

**Robert Brown:** Scottish botanist: in 1827, while examining grains of pollen suspended in water under a microscope, Brown observed minute particles ejected from the pollen grains, **executing a continuous jittery motion**

**Jules Regnault** (1863): « Le calcul des chances » : random walk model of stock price variations (good/bad speculation)

**Louis Bachelier** (1900): **stock price forecasting** is impossible due to endless number of influences though it is possible to study **probability distribution of price variations** (sigma) = volatility risk


**Alfred Cowles** (1933): forecasting stock market prices is impossible (large gap between actual stock prices and professional forecasting)

Michel H. Bouchet (c) CIPE 2022-23

21

**LOOKING TOWARD EARLY WARNING SIGNALS OF UPCOMING CRISIS**

**THE CANARI IN THE COAL MINE?**



- ▶ IMF & WB + UN reports?
- ▶ Rating agencies?
- ▶ CDS prices?
- ▶ Stock market volatility
- ▶ Vix Index
- ▶ Spreads and yields
- ▶ Minsky's speculative bubbles and herd-instinct
- ▶ B. Mandelbrot's fractal geometry
- ▶ N. Taleb's Black Swans
- ▶ D. Sornette's Dragon-Kings (extreme events)
- ▶ Capital Flight?

Michel H. Bouchet (c) OFE 2022-23

22



**MEASURING « EXPECTED UNCERTAINTY »?**

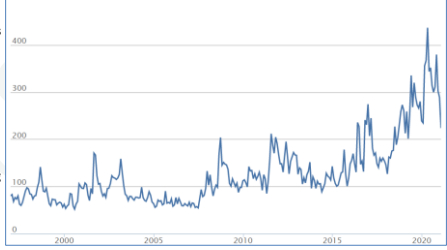
Michel H. Bouchet (c) OFE 2022-23

23

**MEASURING « EXPECTED GLOBAL ECONOMIC UNCERTAINTY » 1985-2021**

**Monthly Index with 3 underlying components**

1. newspaper coverage of policy-related economic uncertainty.
2. number of federal tax code provisions set to expire in future years.
3. disagreement among economic forecasters as a proxy for uncertainty.



Source= Stanford, Chicago + Northwestern-Kellogg School universities

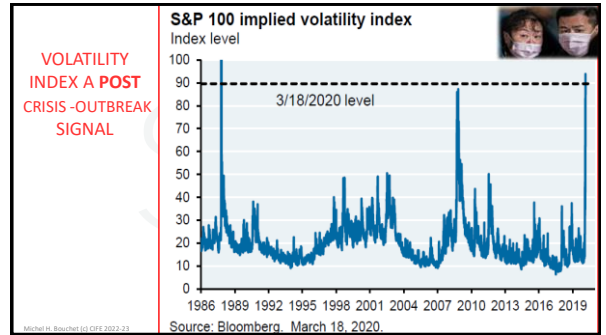
Michel H. Bouchet (c) 2022-2022-23

24





29



30

### CHALLENGE? HOW PREDICTING A SOCIO-POLITICAL CRISIS?

**Liquidity indicators**

- ▶ Inflation
- ▶ Foreign-exchange reserves
- ▶ interest rates differential
- ▶ Non-compressible import cover
- ▶ Debt servicing ratio and current account deficit

**Socio-political and behavioral indicators**

- Corruption and institutional weaknesses
- Political turmoil
- Capital flight
- Bank run : number of customers withdraw their deposits simultaneously due to concerns about banking solvency

**Solvency and structural indicators**

- ▶ Debt levels (Debt/GDP, Debt/X, ST Debt)
- ▶ Worsening terms of trade
- ▶ Productivity's protracted weakness

**Exogenous and global indicators**

- Systemic crisis
- Regional contagion
- Commodity prices
- \$/€ Exchange rate volatility

31

### THE COMPLEXITY OF FINANCIAL RISK!

Cost to protect against Turkish debt default abruptly jumps  
 From zero (left) to several hundred billion

Source: Reuters

32



33

### BUT HOW TACKLING AN « ABNORMAL » RISK?

LARGE, ABRUPT, AND OUTSIDE THE STANDARD TOOLKIT OF RISK INDICATORS?

**Gradual trend of mounting riskiness**

- ▶ Liquidity indicators
- ▶ Solvency ratios
- ▶ Ratings and rankings
- ▶ Surveys and polls
- ▶ Behavioral change
- ▶ Institutional weaknesses
- ▶ Growth slowdown

= « Gaussian law »

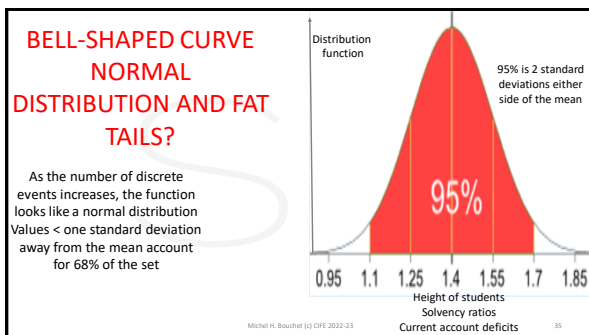
**Abrupt turmoil and crisis**

- ▶ War
- ▶ Coup d'état and Revolution
- ▶ Pandemic crisis (Ebola, HIV, Covid-19)
- ▶ Commodity crisis
- ▶ Sharp Exchange rate devaluation
- ▶ Bank run
- ▶ Global virus contamination
- ▶ Debt crisis and default
- ▶ Nationalization & confiscation

= « Fat tails and Black swans »

34

34



35

### WHAT ABOUT RARE BUT CONSEQUENTIAL RISK AND FAT TAILS?

**▶ Measuring average height**

We select randomly two persons on earth and their total height is ... 4 m  
What is the most likely correlation between them??

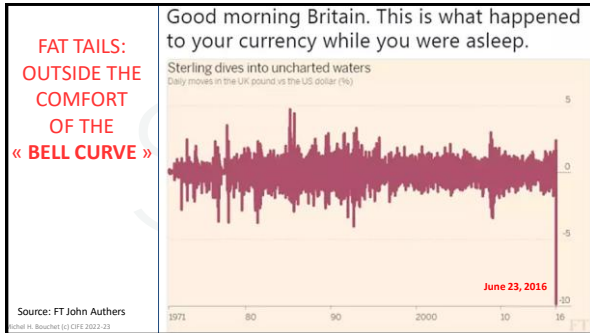
**▶ Measuring growth inequality within and between rich and poor nations?**

We select randomly two persons on earth and their combined income is \$40 million: What is the most likely correlation between them?

Globally an additional 88 million to 115 million people fell into extreme poverty in 2020, a number that could rise to 150 million in 2021-22.

36

36



37

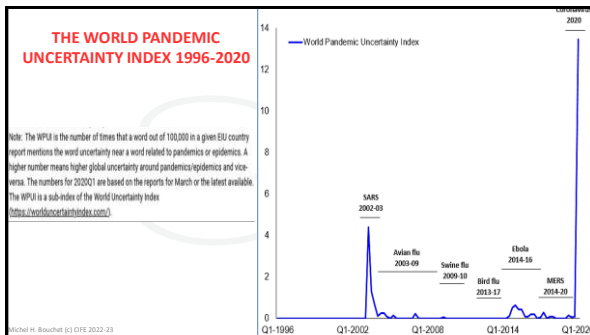
**BLACK SWANS AND DRAGON KINGS**

- **Nassim Taleb's Black Swans:** Major catastrophes are just events that started small and did not stop growing to develop into extreme sizes. These events are **unpredictable!** Black Swans are quantified by heavy-tailed distributions of event sizes ("fat tails" in Gaussian distributions). These outliers come from a small number of observations with a very large impact!

- **Sornette's Dragon Kings:** Very large in impact and born out of unique origins: non-linear systems. These **extreme events** are generated by herd-instinct, feedbacks, and unsustainable super-exponential acceleration before collapse. DKs are beyond the extrapolation of the fat tail distribution. Their occurrences can be **diagnosed ex-ante**, bringing back responsibility and accountability.

Michel H. Bouchet (S) OFE 2022-23

38



39

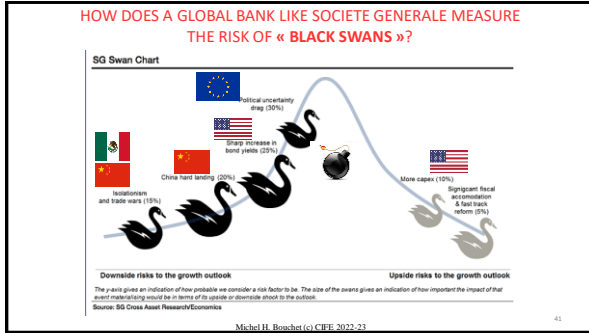
**POWER LAWS AND EXTREME RISKS?**

**Power law probability distributions** = Functional relationship between 2 quantities, where a relative change in one quantity results in a proportional relative change in the other quantity, independent of the initial size of those quantities: one quantity varies as a power of another.

- Considering the area of a square in terms of the length of its side, if the length is doubled, the area is multiplied by a factor of four!
- Car exhaust is distributed according to a power-law among cars : very few cars contribute to most contamination
- Wealth gap and Pareto distribution: The net worth of Americans is distributed according to a power law with an exponent of 2 (the average income hides fat-tails!)
- Power-law distributions are plotted on doubly logarithmic axes, which emphasizes the upper tail region ("extreme events")
- Log-log plot and power-law graph of cumulative distribution of ranking of popularity: right: long tail and left: the few that dominate, also known as the 80-20 rule

Michel H. Bouchet (S) OFE 2022-23

40



### CONCLUSION

▶ Transforming information into economic intelligence = Best risk mitigation strategy!

42



### COFACE + UNDP + TI + WORLD BANK= BETTER OFF IN ITALY OR IN SPAIN?

ITALY	SPAIN
▶ GDP Per capita ppp= \$43000	▶ GDP Per capita ppp=\$41000
▶ HDI= 29	▶ HDI= 25
▶ Life expectancy f = 85,5	▶ Life expectancy f= 86
▶ Infant mortality= 3/1000	▶ Infant mortality= 2,5/1000
▶ Gender inequality: 0,07	▶ Gender inequality: 0,07
▶ Doing Business= 58/190	▶ Doing Business= 30/190
▶ Corruption = 52/180	▶ Corruption = 32/180
▶ Debt/GDP = 155%	▶ Debt/GDP 2021 = 120%
▶ Unemployment = 9,5%	▶ Unemployment= 16%
▶ Budget Deficit 2022: -5,6%	▶ Budget Deficit 2022 = -4,5%

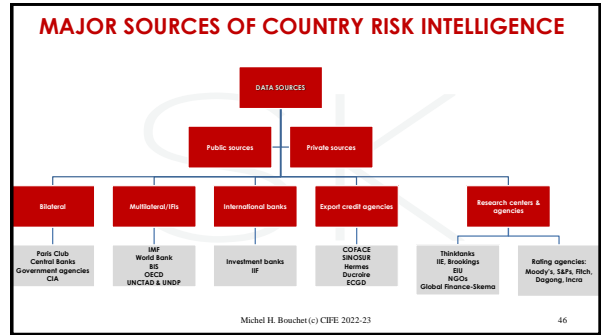
44

## COUNTRY RISK ASSESSMENT IN AN AGE OF GLOBALIZATION?

Reliable and updated information  
= Economic intelligence  
→ Robust risk analysis



45



46

### INFORMATION SOURCES & ANALYSIS

- IMF, World Bank, IFC & MIGA
- UNCTAD & UNDP
- Fed Reserve Bk of St Louis
- BIS, OECD, EBRD, EIB
- Coface, Euler-Hermes
- Moody's, S&P, Fitch, Dagong
- Euromoney, Institutional Investor
- CIA & US State Dept, ICRG
- Transparency International
- Hiscox, AON, Control Group
- DEFI [www.developingfinance.org](http://www.developingfinance.org)






Michel H. Bouchet (c) CIFE 2022-23 47

47



Hello CIFE students! HELP!  
I need a quick risk assessment of Morocco vs Tunisia and Algeria...!

48

COFACE + UNDP + TI + WORLD BANK= BETTER OFF IN TUNISIA, MOROCCO OR ALGERIA?		
 TUNISIA	 ALGERIA	 MOROCCO
<ul style="list-style-type: none"> <li>▶ GDP Per capita = \$10700</li> <li>▶ HDI= 97</li> <li>▶ Life expectancy f = 78</li> <li>▶ Infant mortality= 13/1000</li> <li>▶ Gender inequality: 0,28</li> <li>▶ Doing Business= <b>78/190</b></li> <li>▶ Corruption = <b>74/180</b></li> </ul>	<ul style="list-style-type: none"> <li>▶ GDP Per capita=\$11800</li> <li>▶ HDI= 83</li> <li>▶ Life expectancy f= 75</li> <li>▶ Infant mortality= 22/1000</li> <li>▶ Gender inequality: 0,43</li> <li>▶ Doing Business= <b>157/190</b></li> <li>▶ Corruption = <b>106/180</b></li> </ul>	<ul style="list-style-type: none"> <li>▶ GDP per capita ppp= \$8300</li> <li>▶ HDI = 123</li> <li>▶ Life expectancy= 76</li> <li>▶ Gender inequality = <b>0,49</b></li> <li>▶ Infant mortality= <b>23,7/1000</b></li> <li>▶ Doing Business = <b>53/190</b></li> <li>▶ CPI corruption= 80/180</li> </ul>
<small>Michel H. Bouchet (c) CIFE 2022-23</small>		<small>49</small>